

DETOXDECHL0012511201MAN

English

EVOLUTION  
AQUA

INNOVATION IN WATER



# detox<sup>TM</sup> Dechlorinator

## INSTALLATION AND INSTRUCTION MANUAL

**PLEASE READ INSTALLATION INSTRUCTIONS  
THOROUGHLY BEFORE INSTALLATION.**

**FOR OUTDOOR USE ONLY.  
ALWAYS PROTECT THE UNIT FROM FROST.**

## INTRODUCING THE DETOX DECHLORINATOR

The Evolution Aqua **Detox Dechlorinator** is a quick and simple method of filtering out harmful chlorine and other impurities from tap water. It is ideal for first fill, water changes and top-ups.

There's no need to wait for chlorine to "gas-off" or to use liquid treatments. Simply fill up straight from the hosepipe via the Evolution Aqua Detox Dechlorinator. This unit can be connected using rigid pipework or to garden hose for which connectors are included.

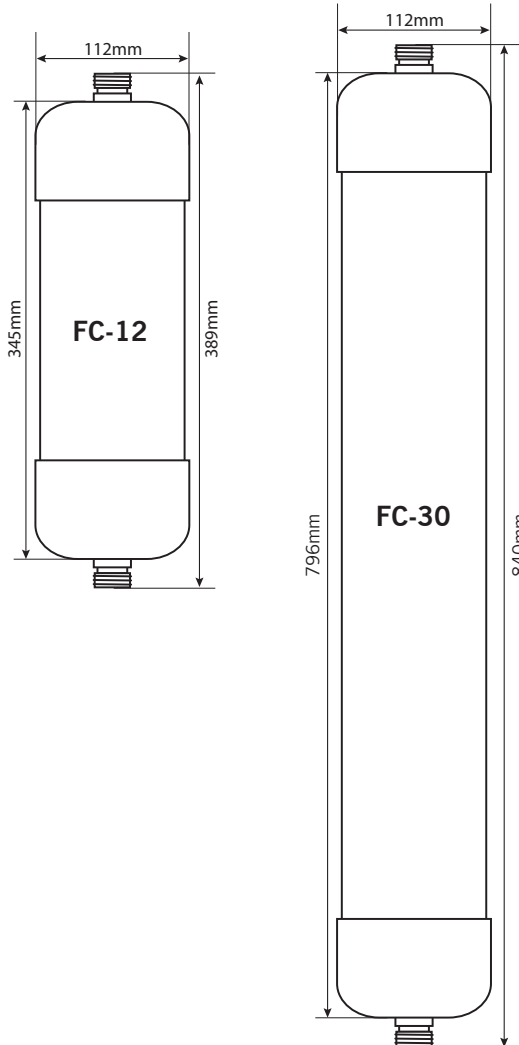
Hi-grade activated carbon removes chlorine, chloramine, bromine, malachite green, dyes, colours, humic acids, organics, proteins, antibiotics, hormones and ozone.

For more detailed information on the Detox Dechlorinator visit our website **[www.evolutionaqua.com](http://www.evolutionaqua.com)**

Please read this instruction manual carefully from start to finish before attempting to install your new **Detox Dechlorinator**.

## INSTALLATION AND DIMENSIONS

The dechlorinator can be used horizontally or vertically. Both ends can be used as either inlet or outlet points. Please observe the maximum flow rate recommended (4 litres per minute / 1 US Gals / min (60 US Gals / hour) and drain after use before storage if being used temporarily and not as a permanent trickle. A lower flow rate will provide better results.



## **CONNECTION TO GARDEN HOSE**

The detox dechlorinator is supplied with connectors for easy connection up to a standard garden hose.

## **CONNECTION TO HARD PIPE**

The detox dechlorinator can also be easily connected up to rigid pipe work.

- Screw a ¾" single union female threaded to plain female connector (EA CODE: K82-76-22) onto each end of the dechlorinator. (Hand tight only)
- Then fit lengths of ¾" pipe into the female end of these single union connectors as needed.

## **CHLORINE REDUCTION**

The Evolution Aqua Detox Dechlorinator will reduce incoming chlorine of 0.5ppm. 0.5ppm chlorine is the average in UK household mains water. We recommend that you check with your local water authority. If the chlorine levels are higher than 0.5ppm, reducing the flow will help.

## OPERATION

The dechlorinator can be used as part of a permanent trickle top up system on garden ponds. Keep the unit out of direct sunlight or high temperatures to achieve maximum life.

**DO NOT EXPOSE THE UNIT TO FROST. DESIGNED FOR OUTDOOR USE ONLY.**

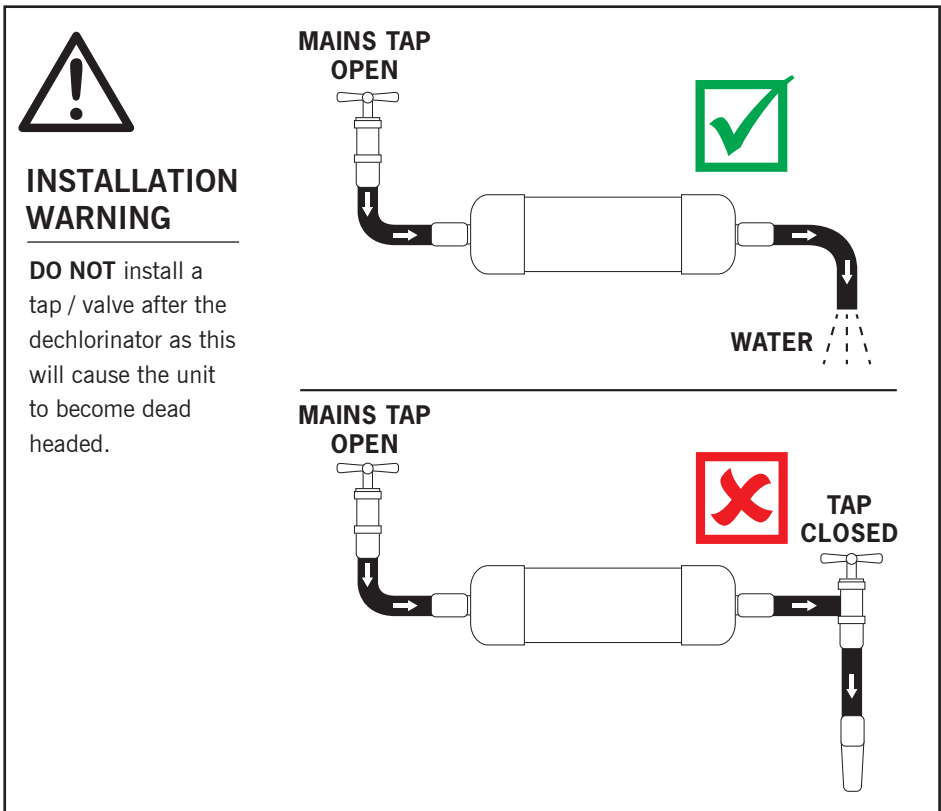
Recommended flow rate: **4 litres per minute / 1 US Gals / min (60 US Gals / hour)**

The 30 inch high-grade activated carbon filter will treat up to\*:  
**550,000 Litres / 122,083 U.K. Gallons / 146,615 U.S. Gallons**

The 12 inch high-grade activated carbon filter will treat up to\*:  
**225,000 Litres / 49,493 U.K. Gallons / 59,439 U.S. Gallons**

The dechlorinator must not be used in freezing conditions as this can cause irreparable damage and invalidate your warranty.

\*Maximum treatable water is based on incoming 0.5ppm chlorine.



## **STORAGE**

When not in use, ensure the dechlorinator is kept in a cool, dark place and that the carbon is fully drained.

### **DO NOT EXPOSE THE UNIT TO FROST.**

The dechlorinator must not be used in freezing conditions as this can cause irreparable damage and invalidate your warranty.

## WARRANTY

The Detox Dechlorinator is covered by your warranty for 1 year from the date of purchase provided that:

- a. The unit is / has been protected from frost at all times.
- b. The unit has not been used during freezing conditions.
- c. It is installed, operated and regularly maintained in accordance with the instruction manual.
- d. Any warranty repairs to the Detox Dechlorinator must be undertaken by Evolution Aqua Ltd or its authorised representatives.
- e. A proof of purchase will be required when making a warranty claim.

Though the warranty period may not have expired, payment for repairs must be made in the following cases:

- a. When the fault is due to misuse or unauthorised repairs have been attempted.
- b. When the fault is due to fire, natural disaster, act of God etc.
- c. If the warranty has been lost, incorrectly completed or details fraudulently changed.

Evolution Aqua Ltd. accepts no responsibility or liability for any consequential loss caused by or arising from the use of any Evolution Aqua products. Therefore, any dispute arising from the provisions of the warranty will be dealt with under the laws of England and Wales subject to the exclusive jurisdiction of the English Courts.

**Evolution Aqua** are the award winning pond filtration manufacturer who put innovation, research and development at the top of their agenda. With a proven track record for delivering the latest technology to the aquatics and fish farming markets - we are the first choice for everyone from the general hobbyist to the serious fishkeeper. Find out more about the Detox Dechlorinator and all of our other innovative products at [www.evolutionaqua.com](http://www.evolutionaqua.com). The difference is clear.

# EVOLUTION AQUA

INNOVATION IN WATER

## **Evolution Aqua Ltd**

Evolution House  
Kellet Close  
Wigan  
Lancashire  
United Kingdom  
WN5 0LP

t: +44 (0) 1942 216554

f: +44 (0) 1942 418 489

e: [info@evolutionaqua.com](mailto:info@evolutionaqua.com)

w: [www.evolutionaqua.com](http://www.evolutionaqua.com)